

Morphological modelling results Cortanovci



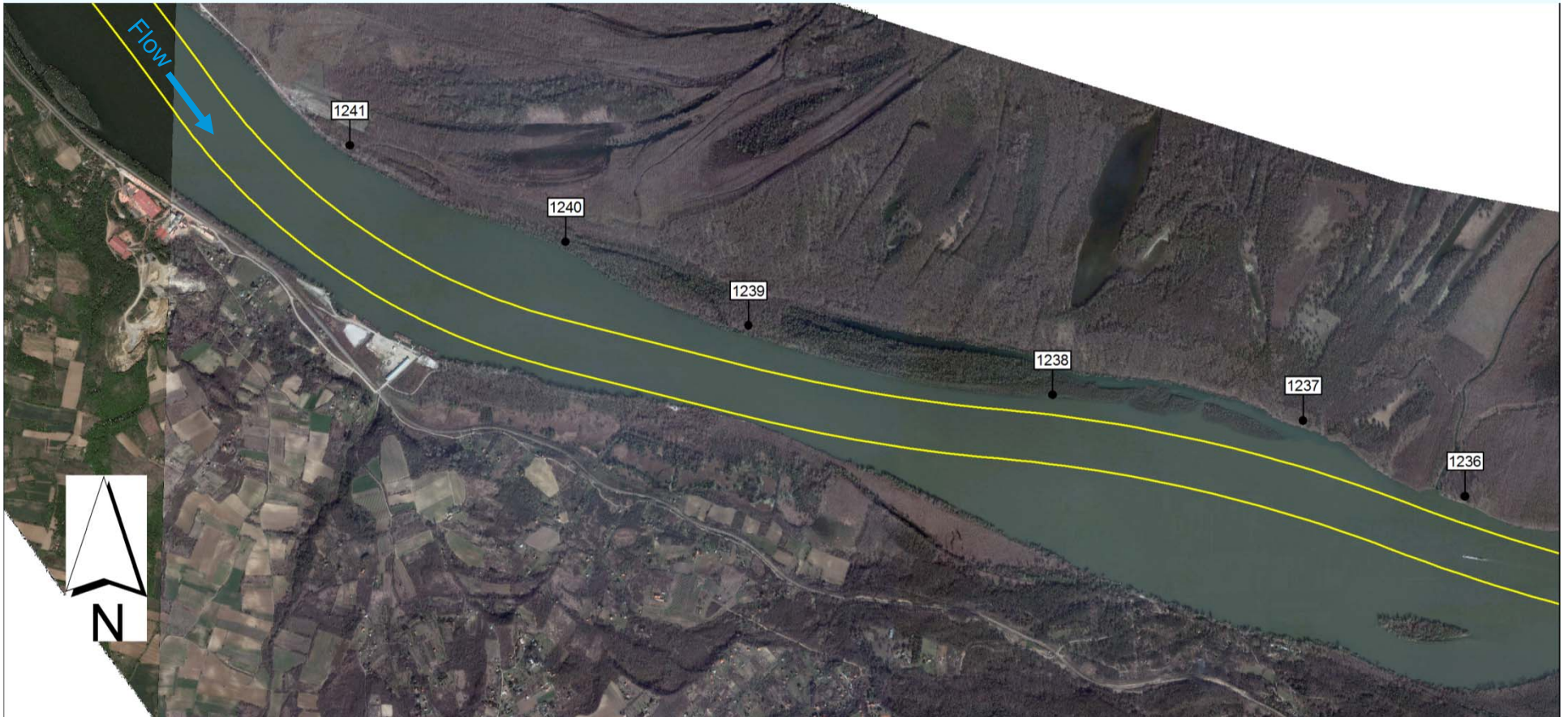
Preparation of Documentation for River Training and Dredging Works on Selected Locations along the Danube River. A project funded by the European Union

6 February, 2013

22. Sector – Cortanovci (km 1,241.6 – 1,235.0)

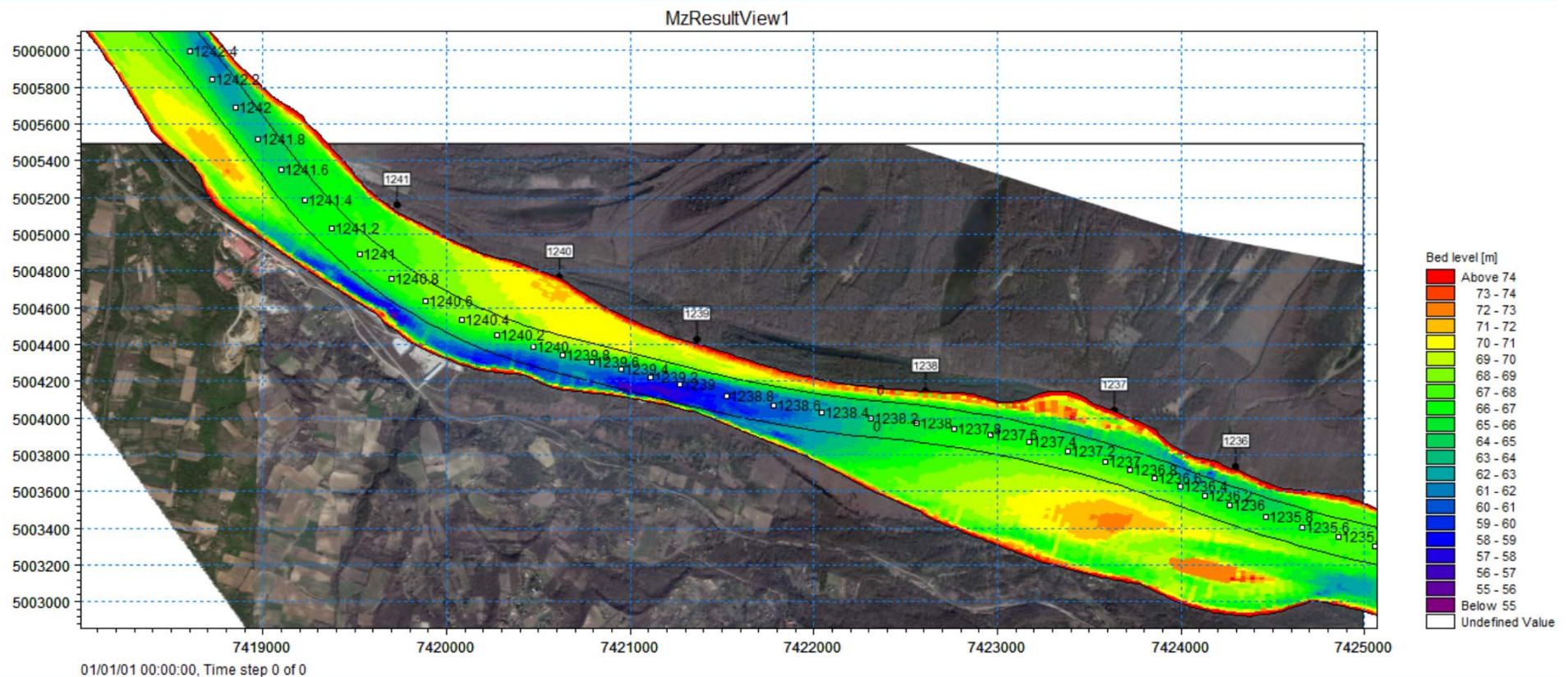


22. Cortanovci – existing situation



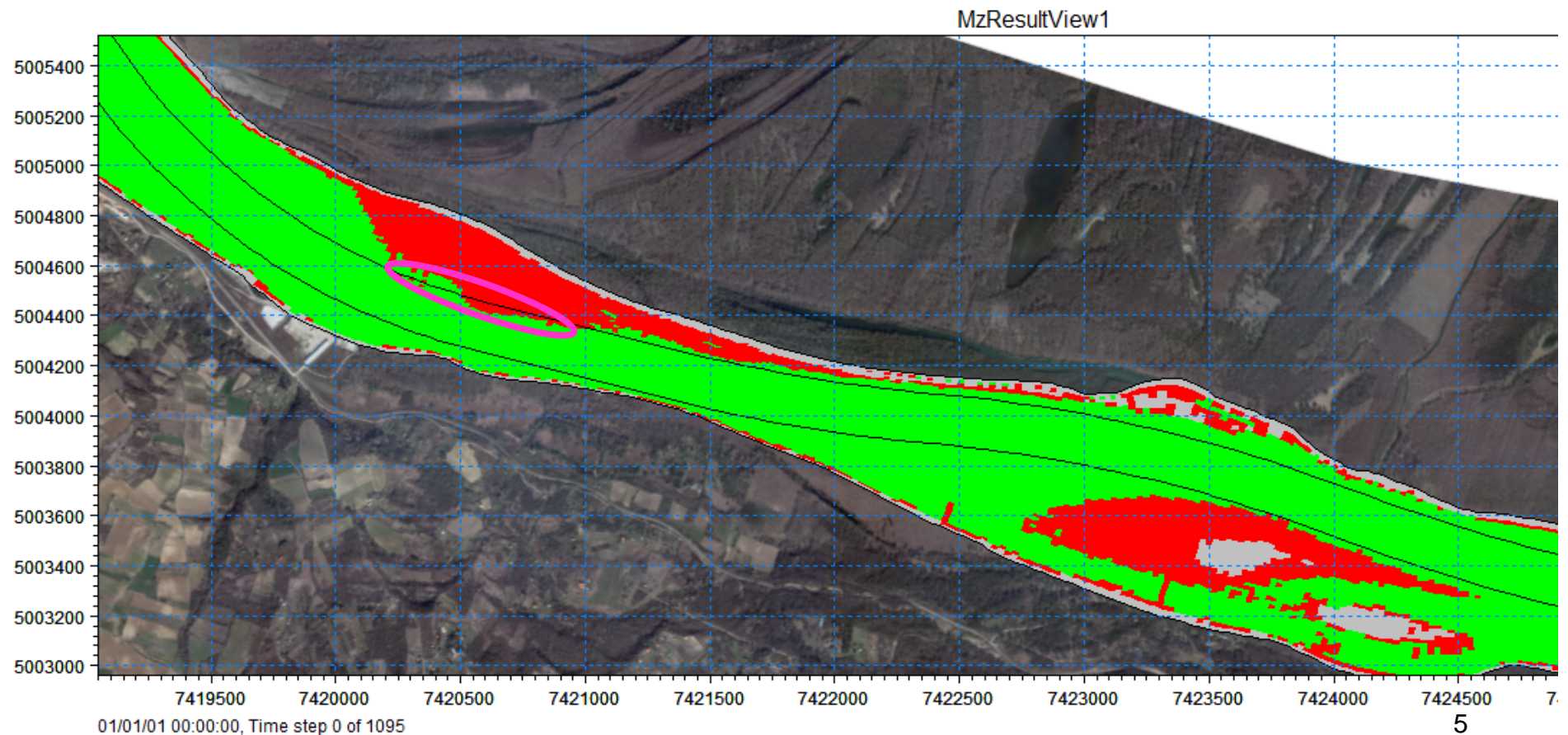
22. Cortanovci – existing situation

Existing bed level (2012)?



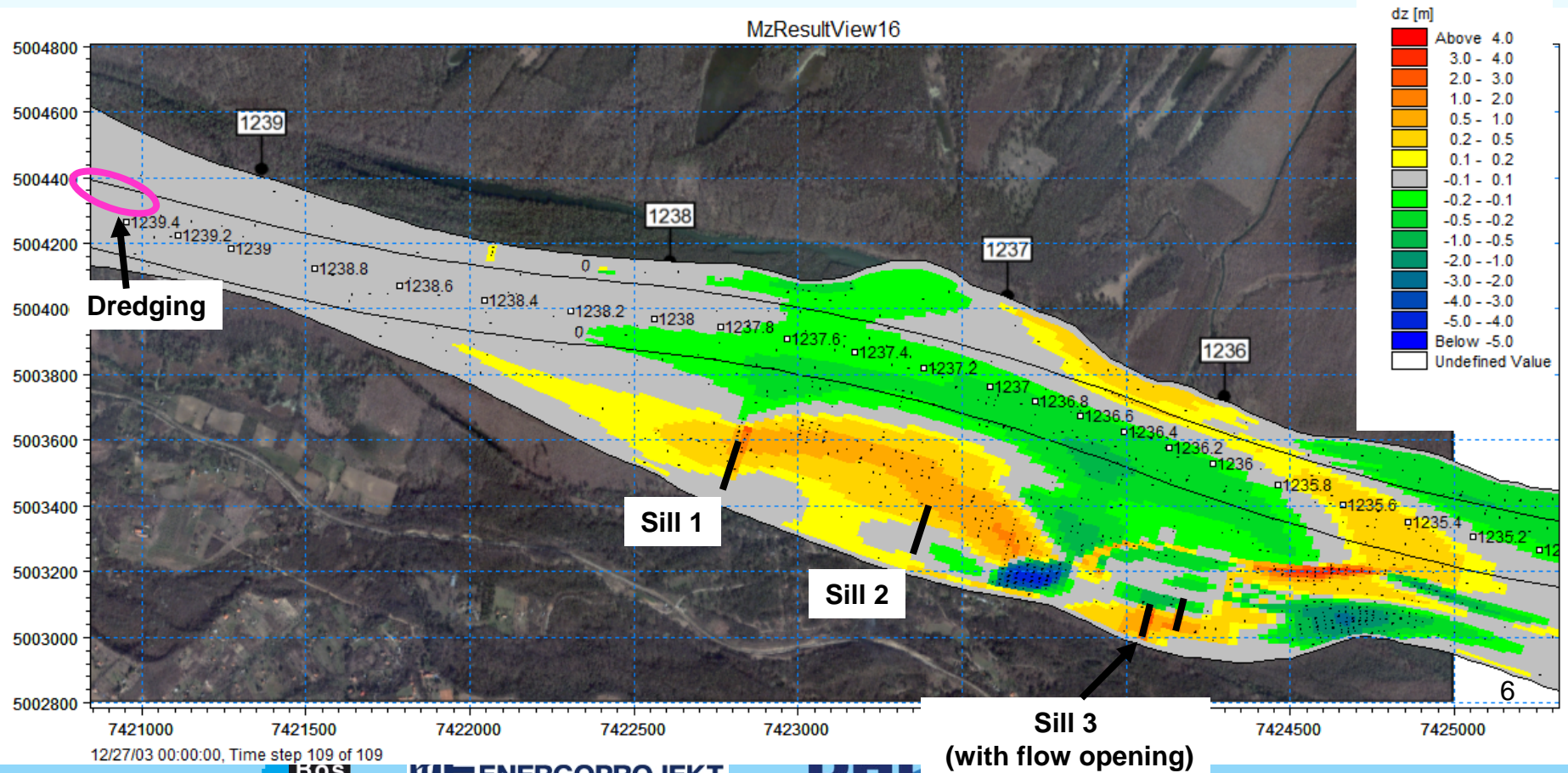
22. Cortanovci – existing situation

Where is the depth less than 2.5 at DLNL (2012)?



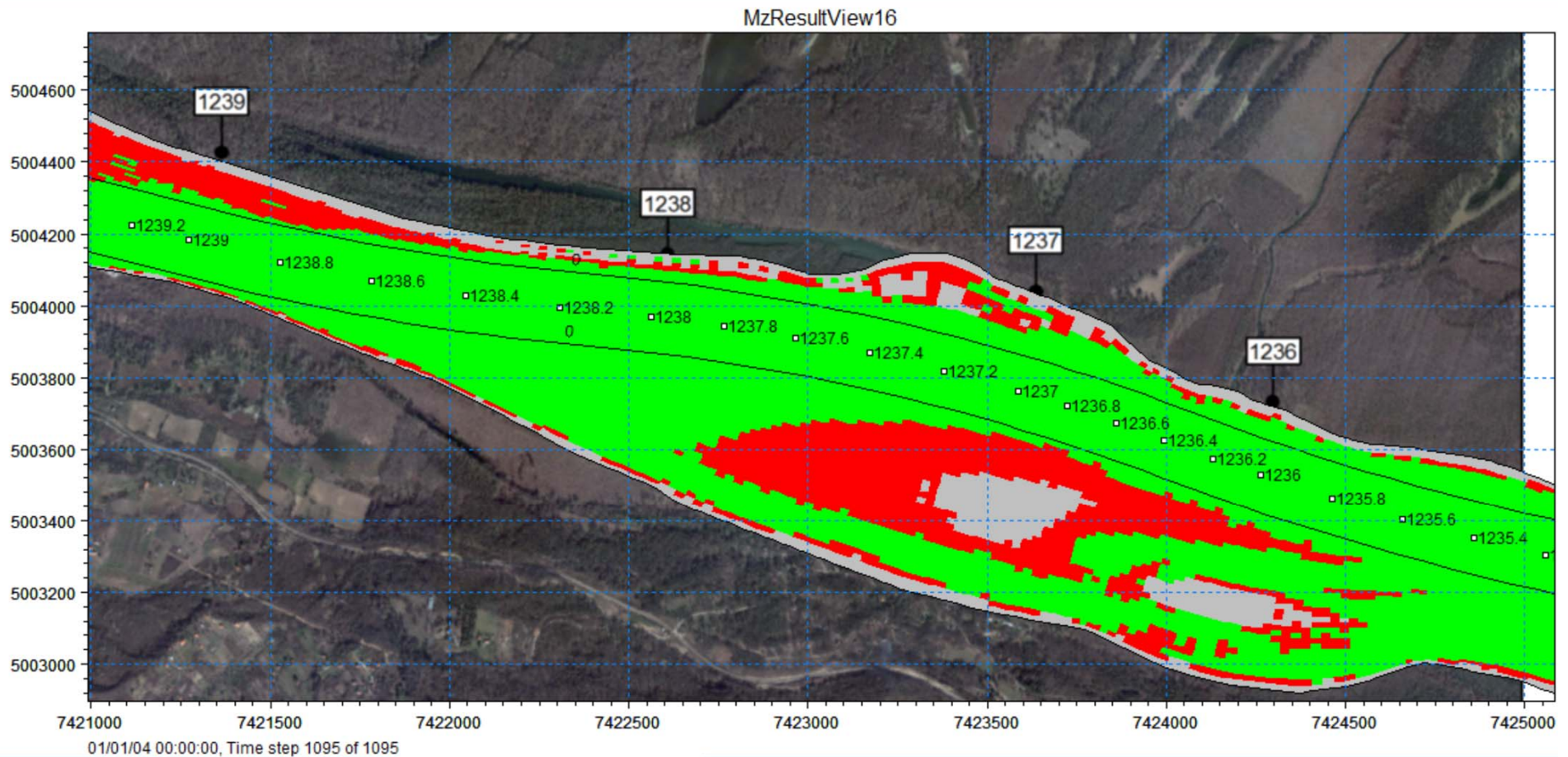
22. Cortanovci – simulations

Simulated bed level changes after 3 years:



22. Cortanovci – simulations

Sufficient depth after 3 years?



22. Cortanovci – conclusions

- Upstream: dredging will be carried out
- Downstream:
 - 3 sills will be constructed (DLNL -2m)
 - Downstream sill between island and right bank will have an opening for environmental purposes
- Effect on the fairway is limited but the option contributes to stabilising the river in this stretch.

Thank you for your kind attention

