

# Morphological modelling results

## Arankina Ada



Preparation of Documentation for River Training and Dredging Works on Selected Locations along the Danube River. A project funded by the European Union

6 February, 2013

## 21. Sector – Arankina Ada (km 1,247-1,244.8)



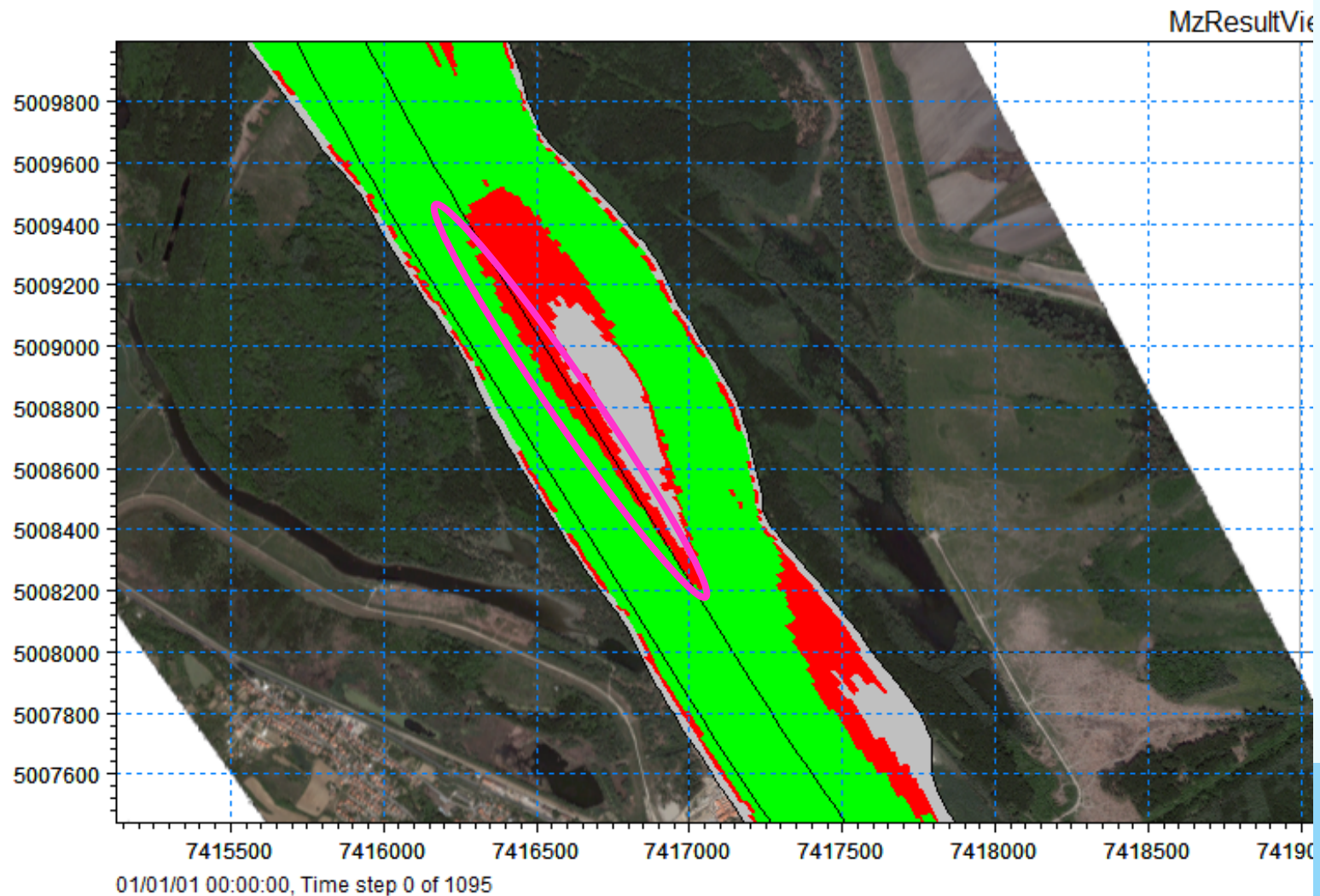
## 21. Arankina Ada – existing situation





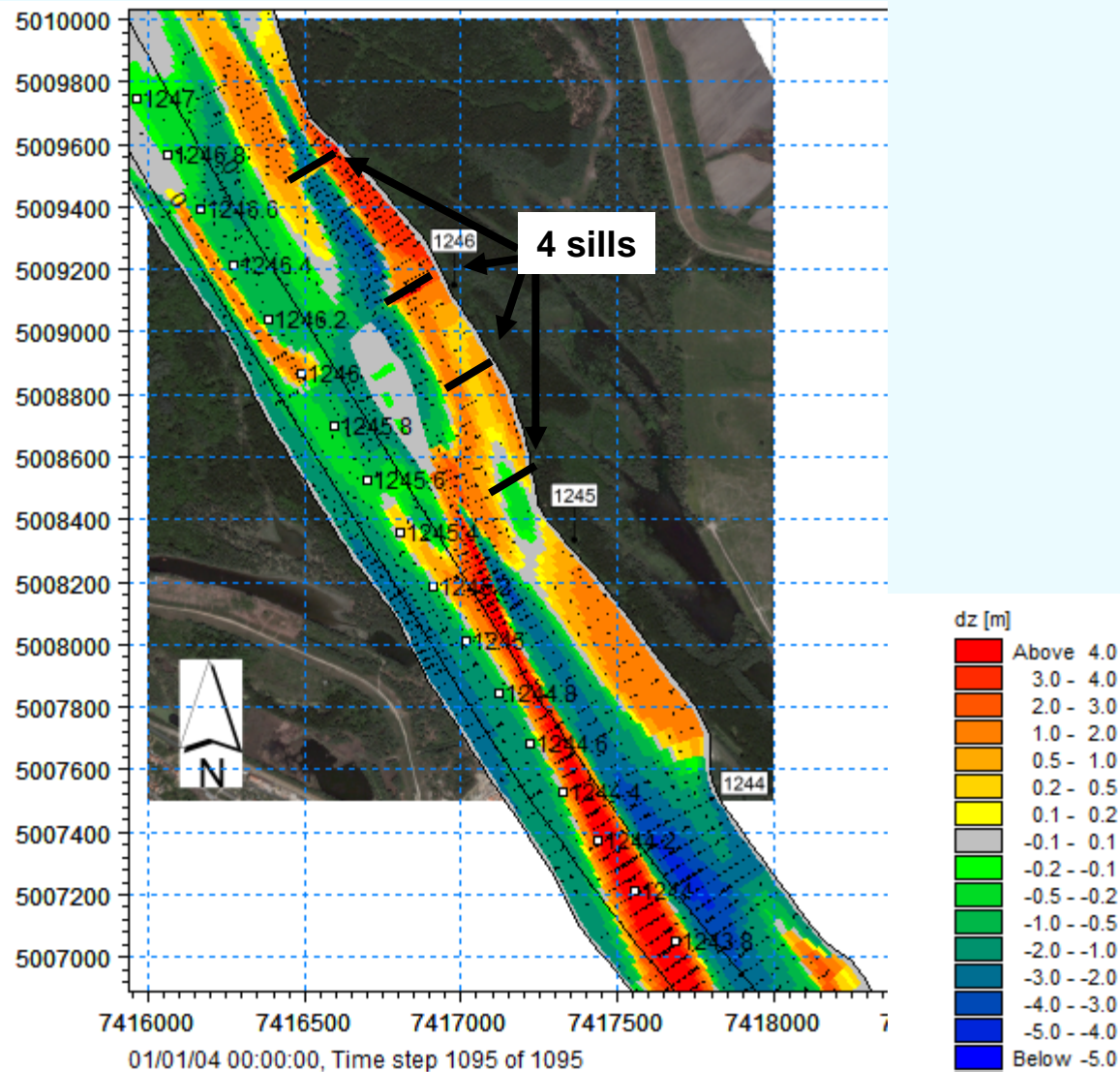
## 21. Arankina Ada – existing situation

Where is the depth less than 2.5 at DLNL (2012)?



# 21. Arankina Ada – simulation

Conceptual design: Simulated bed level changes after 3 years



## 21. Arankina Ada – conclusions

- Various scenarios with different amount of sills and sill heights were tested.
- At sector the problem is solve but additional problem is created downstream the sector.
- It appears that dredging is the best solution.
- Dredging volume is about 15,000 m<sup>3</sup> and the back filling rate has to be determined

# Thank you for your kind attention

