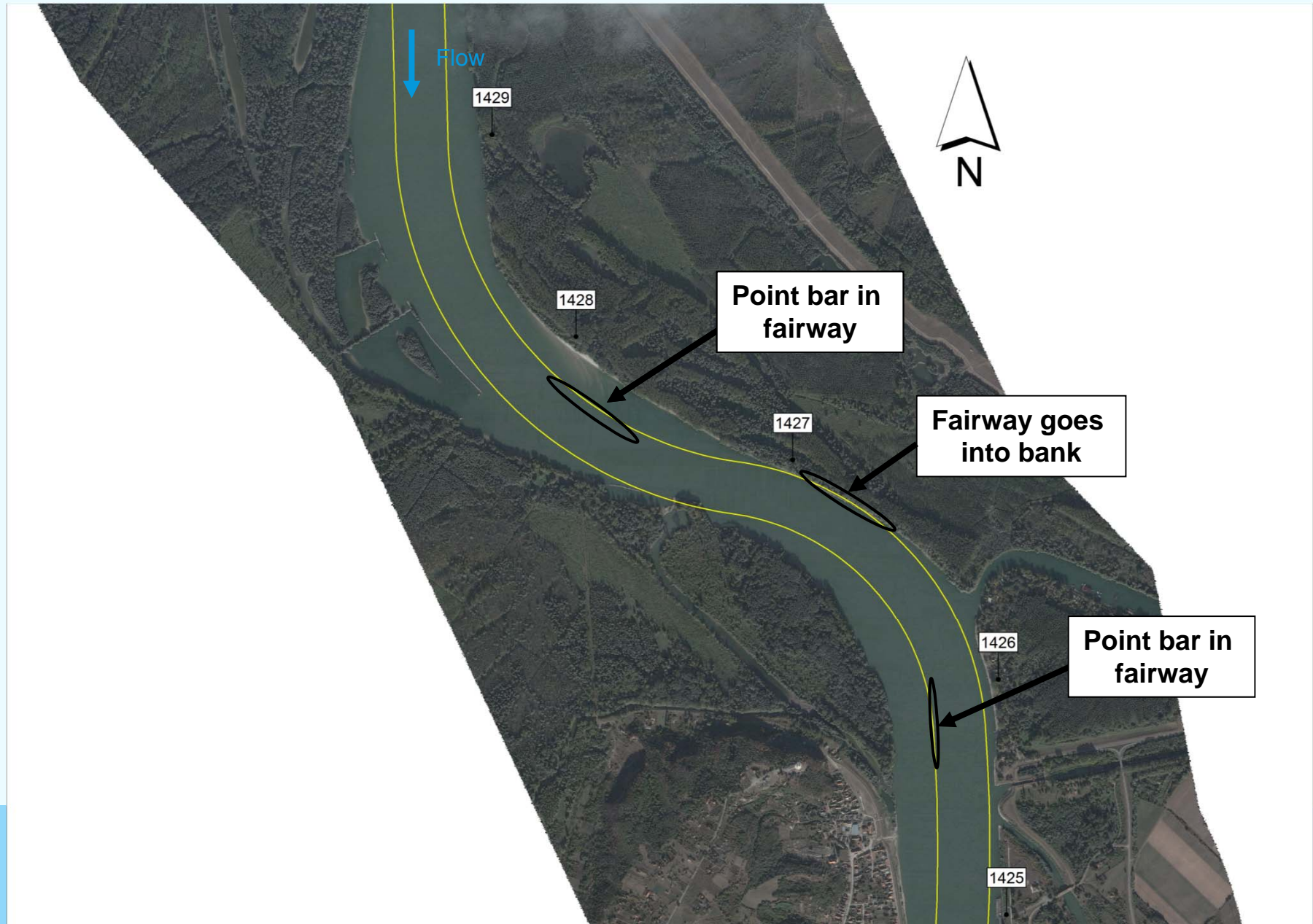


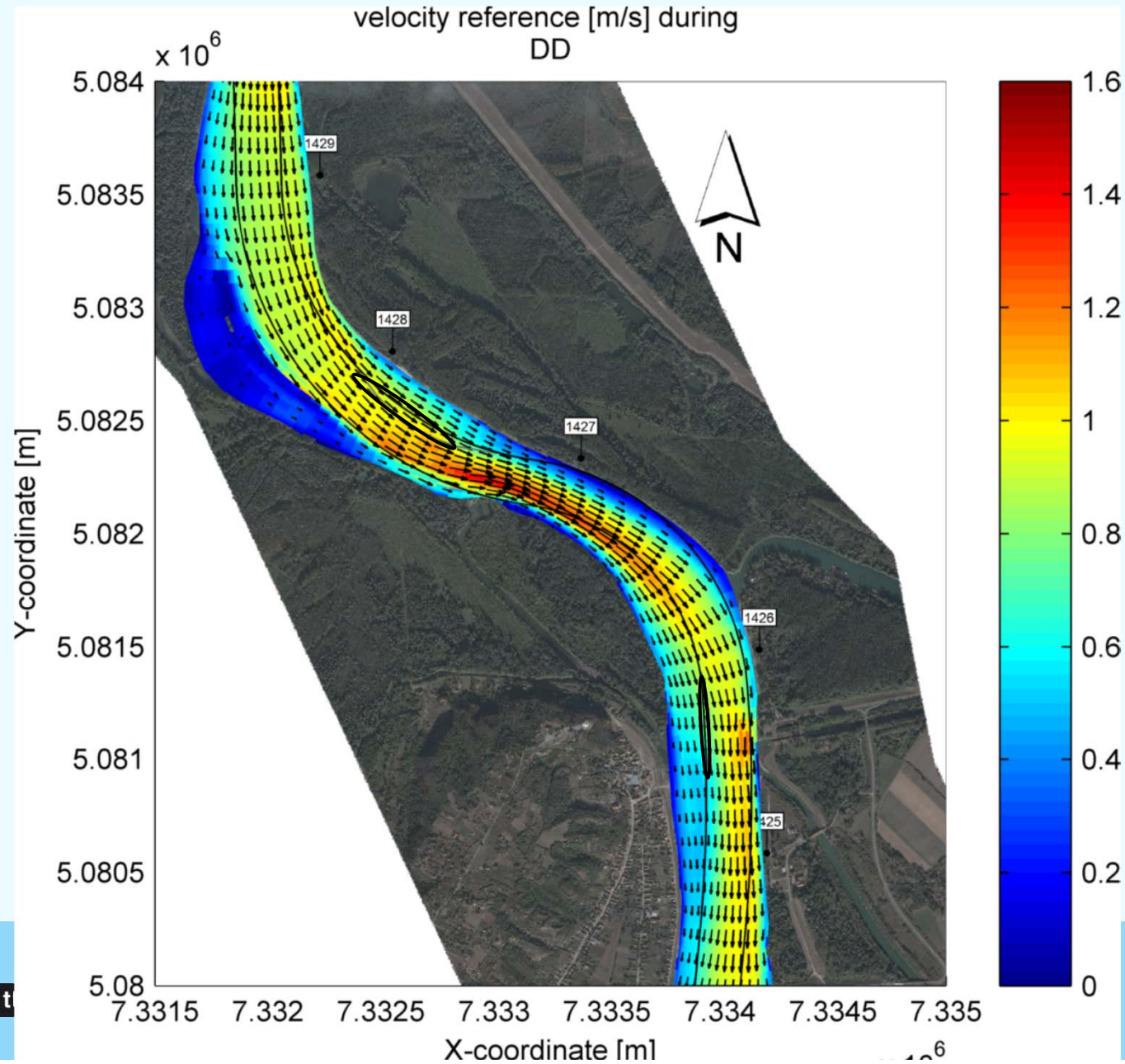
# 1. Bezdan (km 1,429 – 1,425)



# 1. Bezdán – existing situation

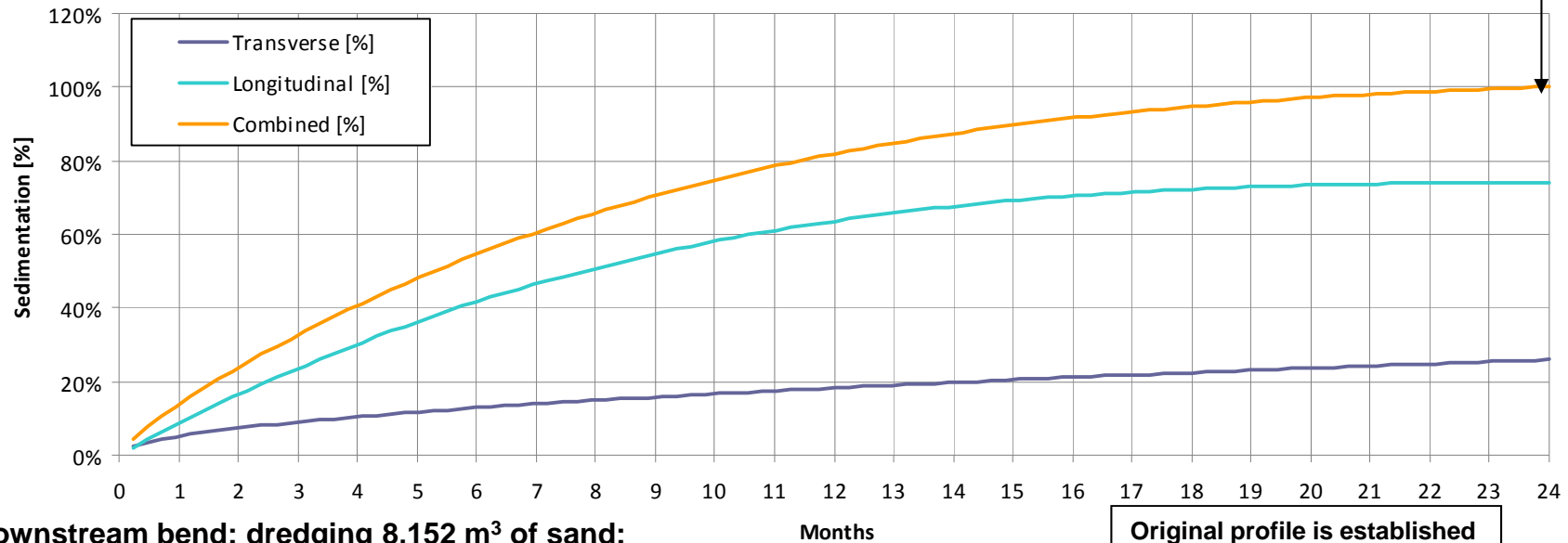


# 1. Bezdan – existing situation

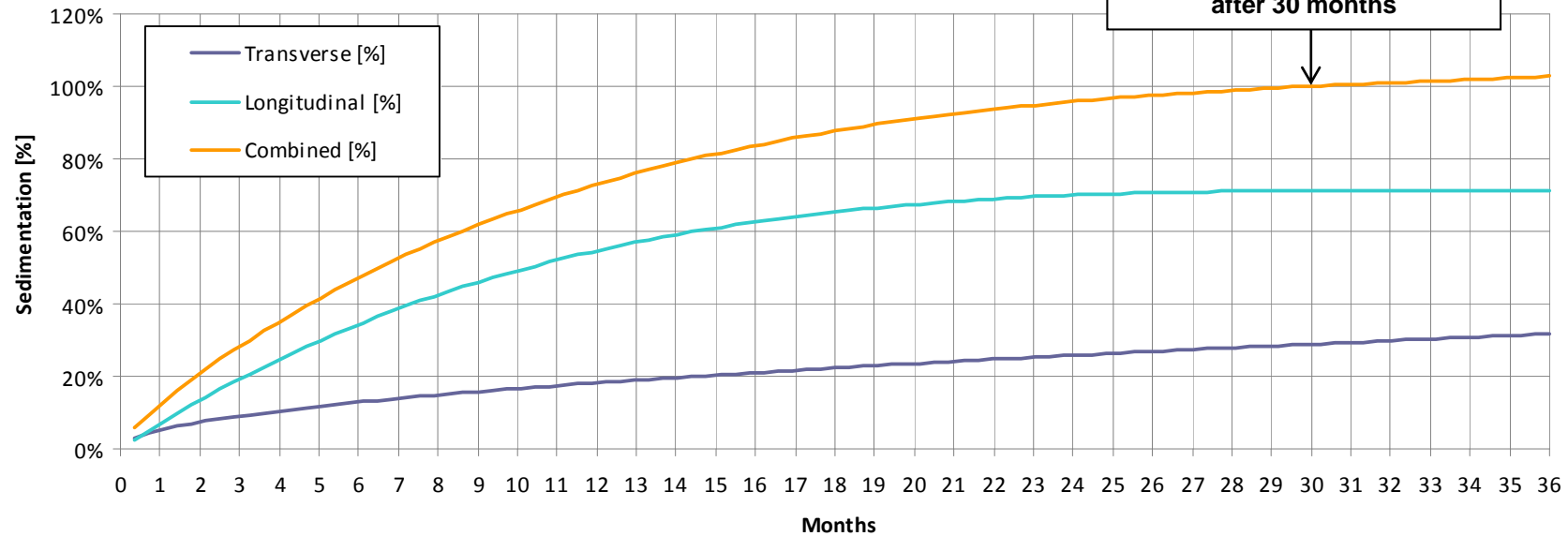


# 1. Bezdán: option 2 – dredging

Upstream bend: dredging of 32,920 m<sup>3</sup> of sand:

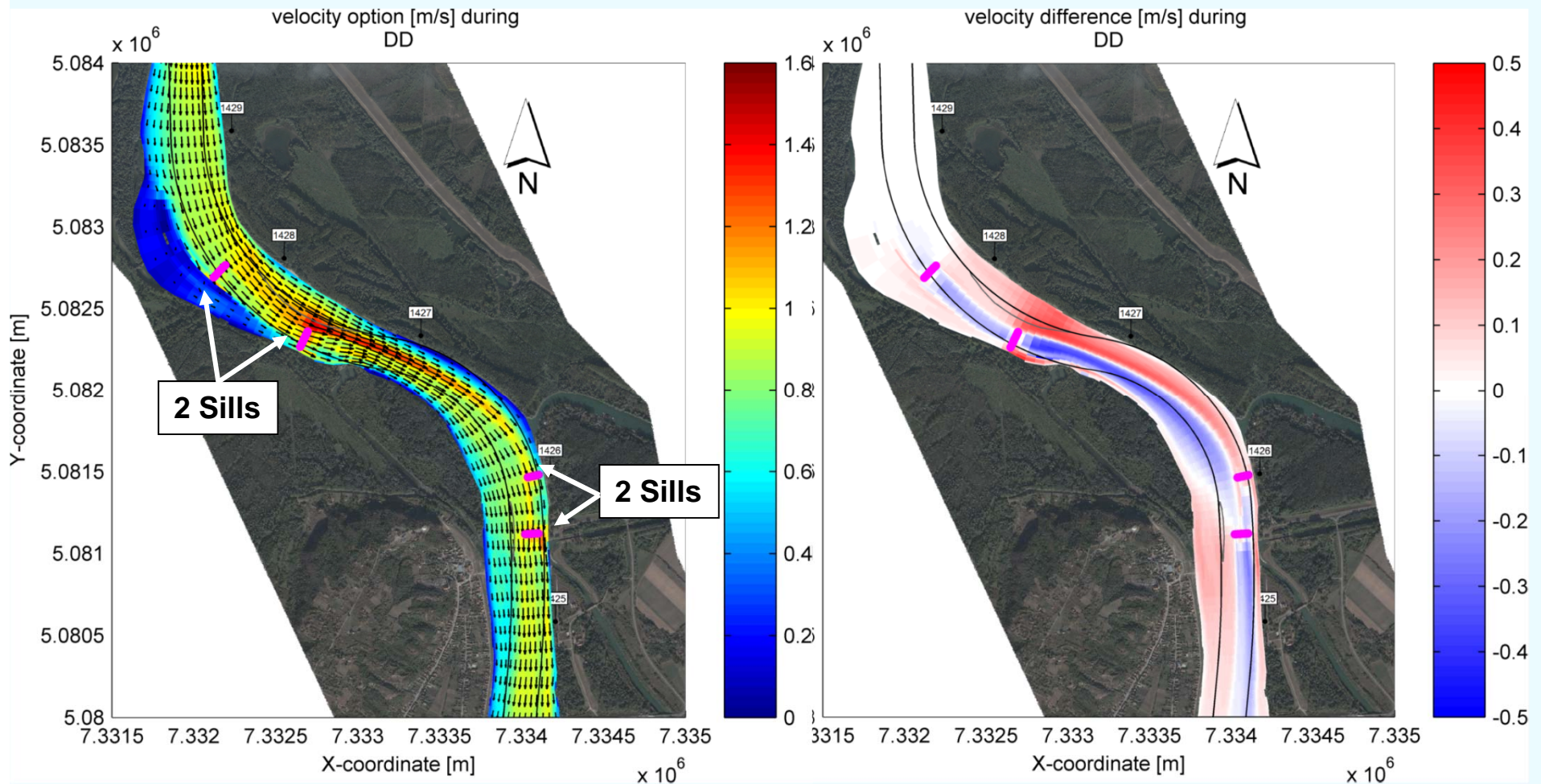


Downstream bend: dredging 8,152 m<sup>3</sup> of sand:

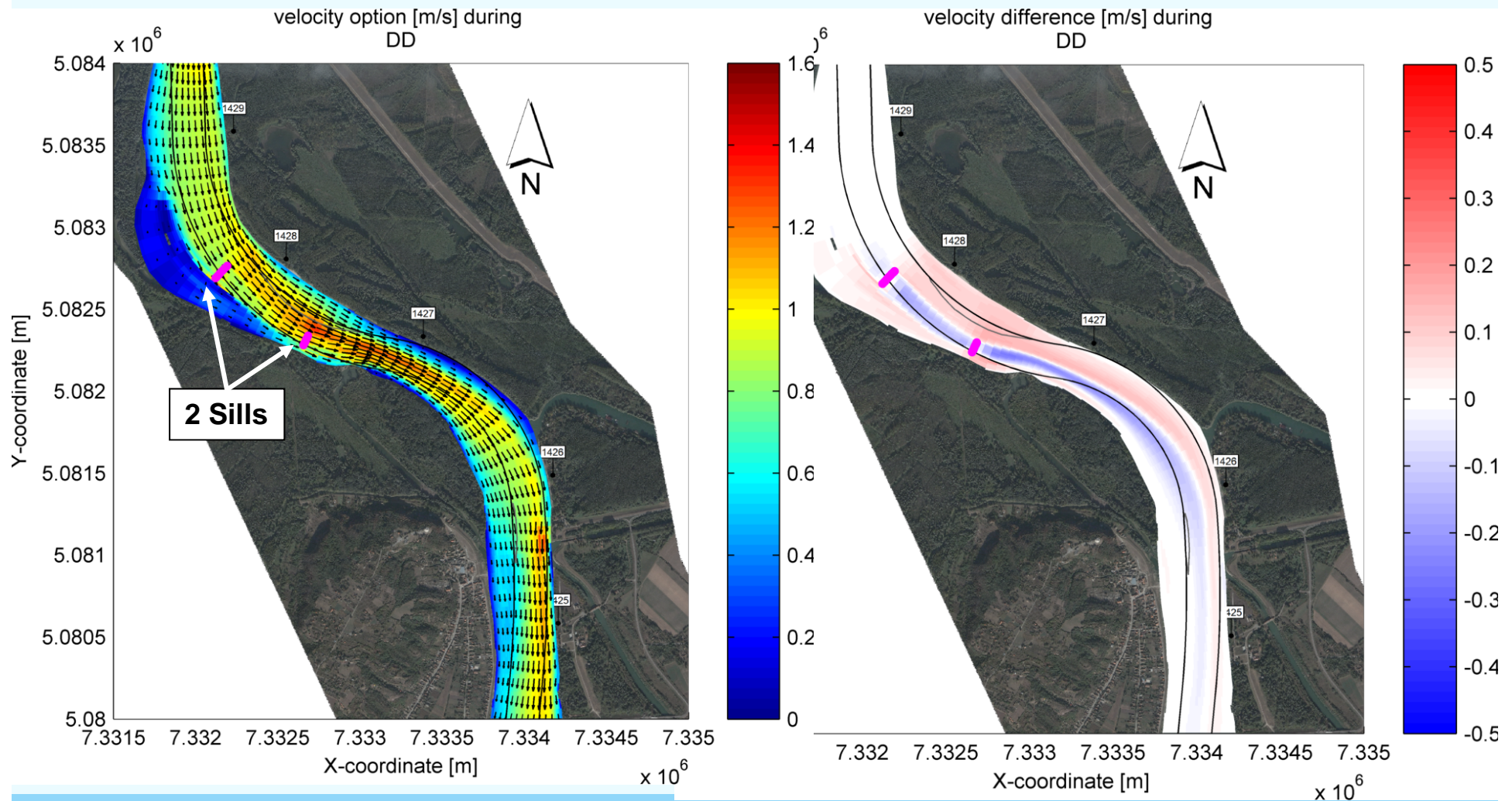




# 1. Bezdan: option 3 – 4 sills and fairway realignment



# 1. Bezdan: option 5 – 2 sills, dredging, fairway realignment



# 1. Bezdan - evaluation

- Navigation:
  - River width will increase due to the sills providing more space for the fairway;
  - Realignment of fairway is required.
- Environment:
  - Sill heights were optimised;
  - Option 5: reduced height of 2<sup>nd</sup> sill.
- Cost:
  - Sills are 180 - 230 m wide and averaged height is about 2-5.5 m;
  - Recurrent dredging is required (+/- every year).

# 1. Bezdán - MCA

Option	Description	Navigation weight: 25%	Environment weight: 40%	Technical matters weight: 25%	Cost weight: 10%
1		Has not been selected for modelling			
2	Dredging	1	3	3	3
3	4 Sills + fairway realignment	3	1	1	2
4		Has not been selected for modelling			
5	2 Sills +dredging + fairway realignment	2	2	2	1

- According to the MCA the Option 3 scores best



# Thank you for your kind attention

